

# PTKG5000

TOW TRUCKS

## STANDARD FEATURES

### Performance

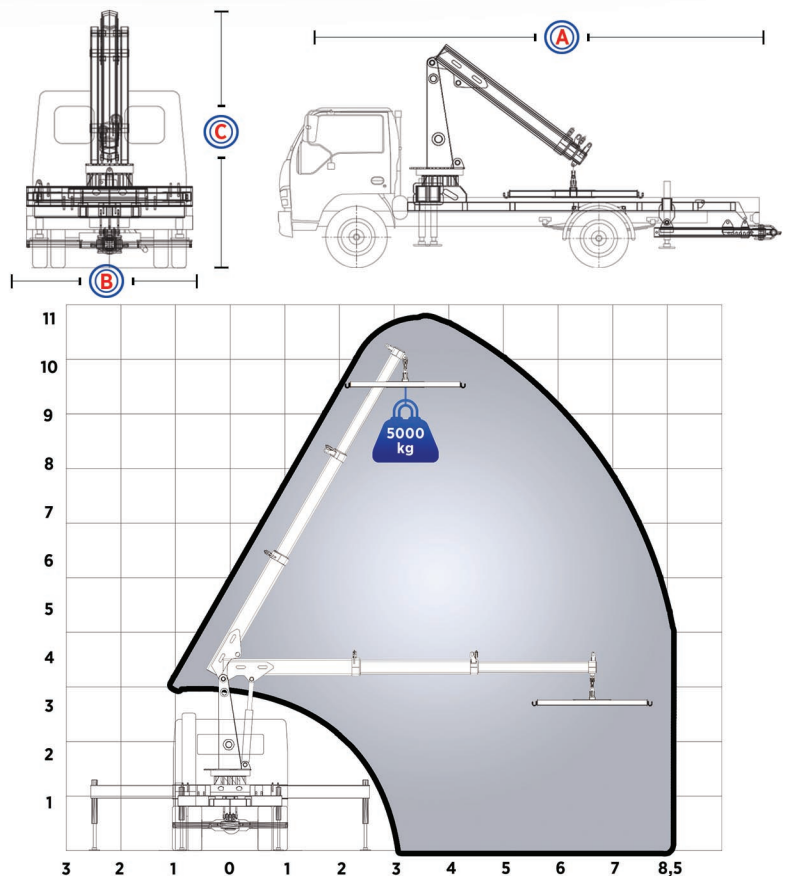
- Lighting
- Engine Start/Stop System on Base Control Panel (vehicle dependent)
- Rotating Beacon on Turret
- All-terrain Outrigger Swivels
- Non-slip Body
- Toolbox (2 pieces)
- Flashing Beacon with Paging
- Control Panels on Both Sides of Truck

### Safety

- TS-EN 280 + A1 / CE Conformity
- Emergency Stop Buttons on Control Panels
- Pressure Holding Valves and Interlocking Valves against hose blasts
- High Pressure Relief Valve
- Emergency Descend Hand Pump

## OPTIONAL FEATURES

- Electronic Load Scaling
- Automatic One-button Platform Leveling
- Continuous Turret Rotation
- External AC Powerpack
- Electronic Card Controlled Proportional Joystick System
- Towing Apparatus (+1 Vehicle Towing Capacity)
- Custom Paint Color
- Additional Lighting



Technical Data		PTKG 5000
Operating Height		11 m
Lateral Outreach		8,5 m
Turret Rotation		270°
Crane Load Capacity		5000 kg
Ⓒ Stowed Height		3100 mm
Ⓐ Stowed Length		5700 mm
Ⓑ Stowed Width		2200 mm
Width Outriggers Extended		6000 mm
Control System		Hydromechanical
Weight		3550 kg
Vehicle Segment		GVW 7,5 t